



EasyCore for the joint project WASA-wadden sea archive



Status report, January 2018

WASA's focus is to identify and investigate coastal archives in order to reconstruct the development of the Quaternary paleo-landscapes. WASA is an interdisciplinary research project that integrates sedimentology, hydroacoustics, geochemistry, palaeoecology and archaeology in a multiproxy approach. The synthesis of the collected data will provide detailed information about the environmental development of the paleolandscapes.

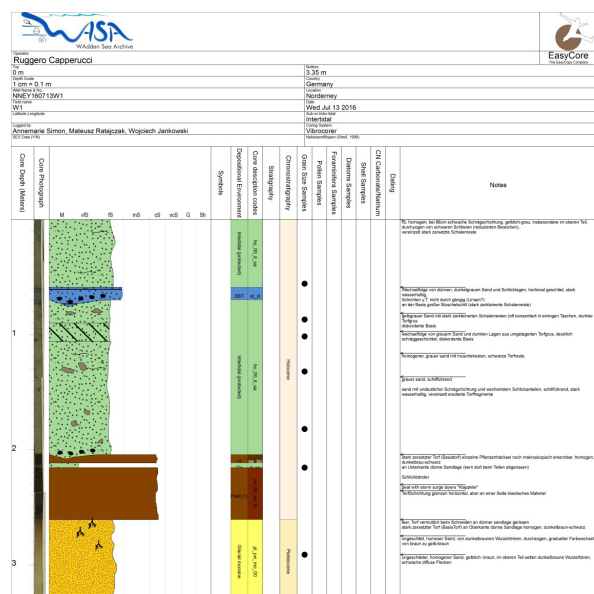
Therefore, it is crucial for all working groups to visualize

- the lithological description
- the facies description
- any specifics
- the sampling positions of all working groups
- the chronostratigraphy

EasyCore proves to be an ideal tool for these purposes.

We optimized our newly designed core catalogue (see status report August 2017) and added some more patterns. About 60 cores have been sketched so far, being in revision for the final design (see fig. 1 as example).

Fig. 1: Example for an EasyCore sketch adapted to the WASA purposes. The sketches and some first profile sections have been presented in several internal and also official meetings.



Kind regards,

F. Bungenaber

on behalf of the WASA team.