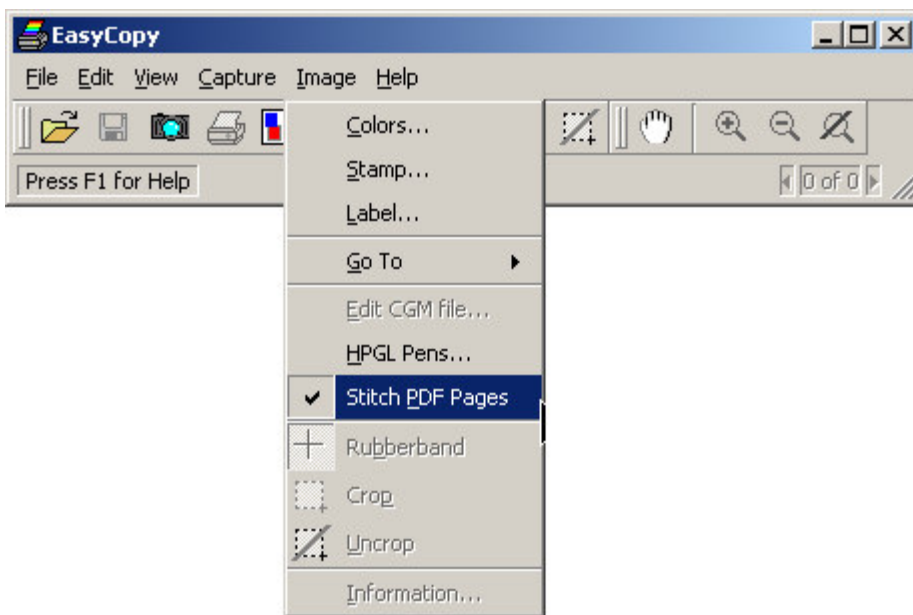


Concatenating (stitching) PDF Well Logs

A new feature in EasyCopy 8.1 is the ability to concatenate 'stitch' multi-page PDF well logs into a single display with any white space removed.

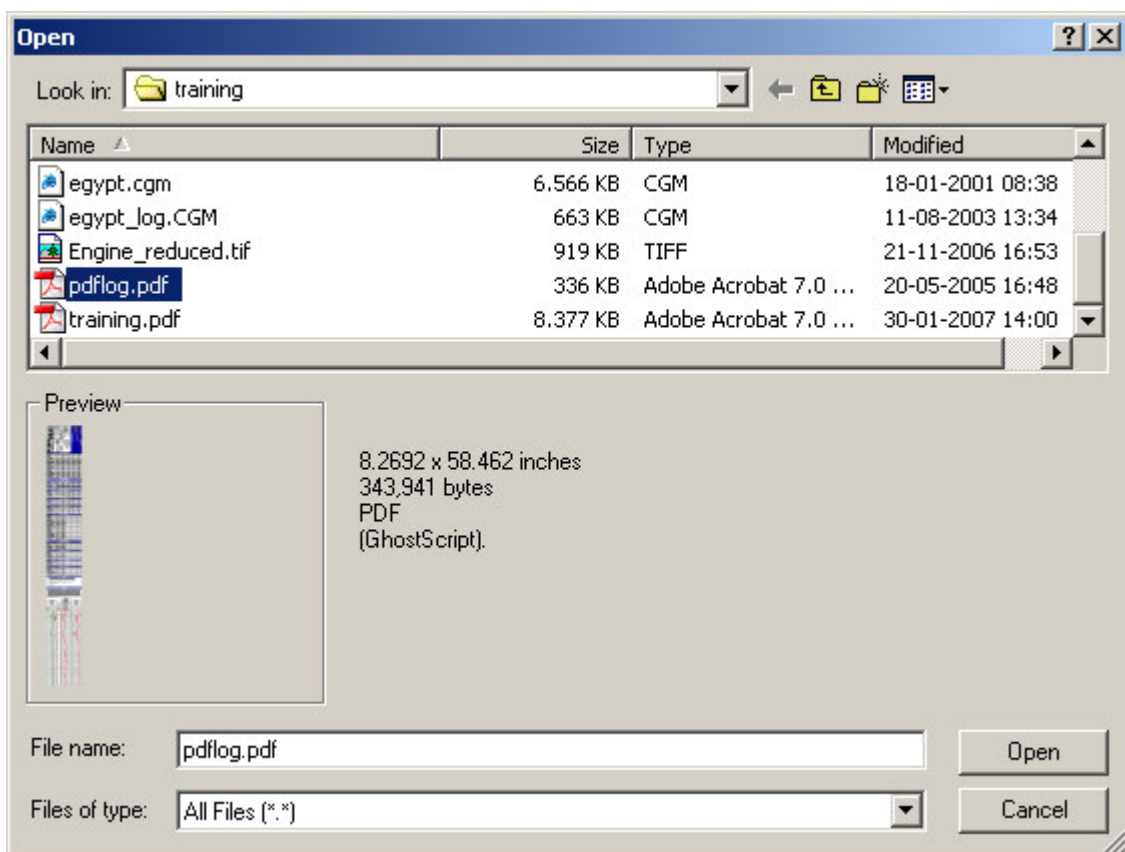
To use this feature the 'Stitch PDF Pages' feature must

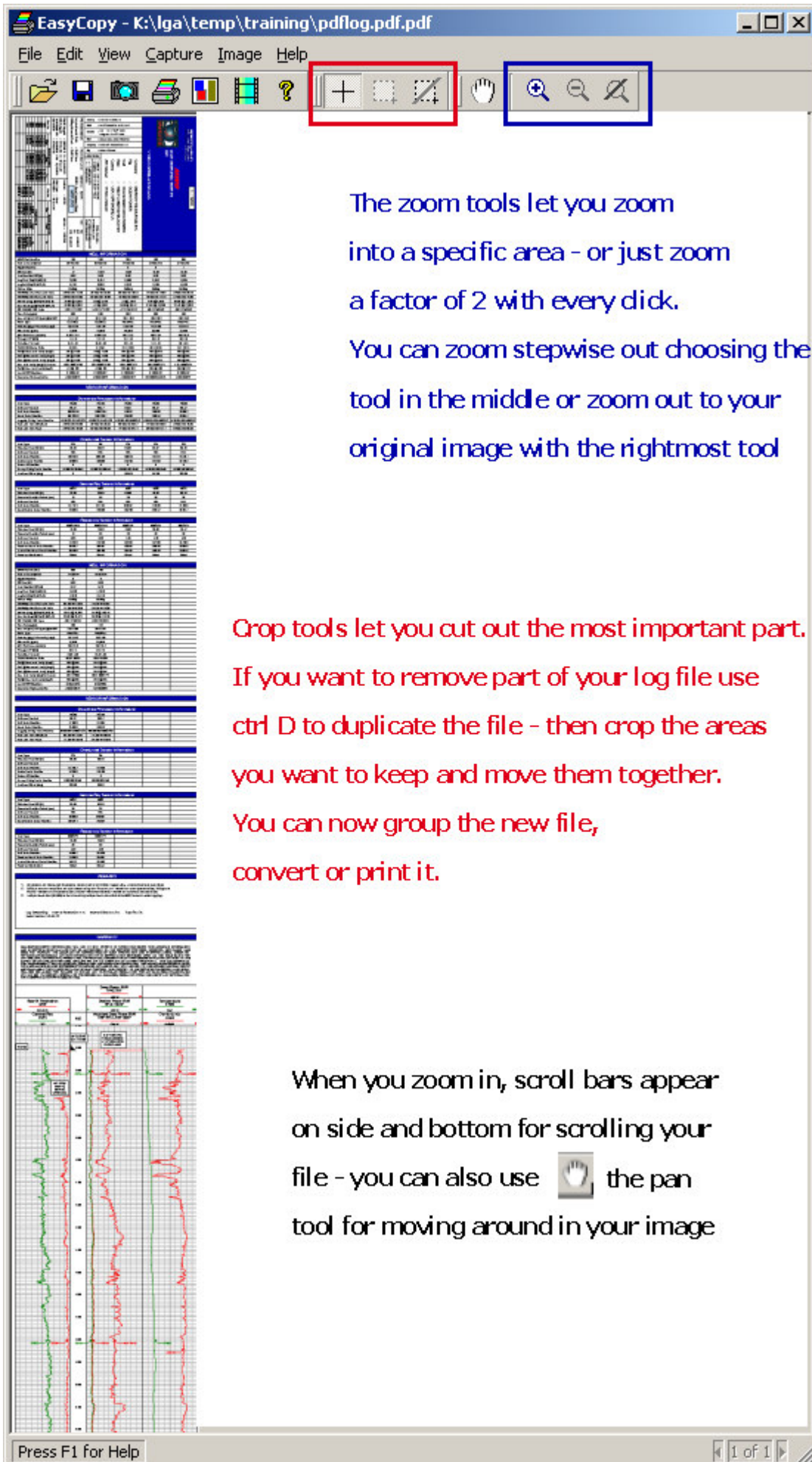
If this function is not enabled the pages can only be shown one at a time using the 'Image/Go To' function.



There is one fundamental requirement for this feature to work – all the pages in the PDF file must be the same size (Letter, A4....).

The joined log can then be printed maintaining the original data 1:1.






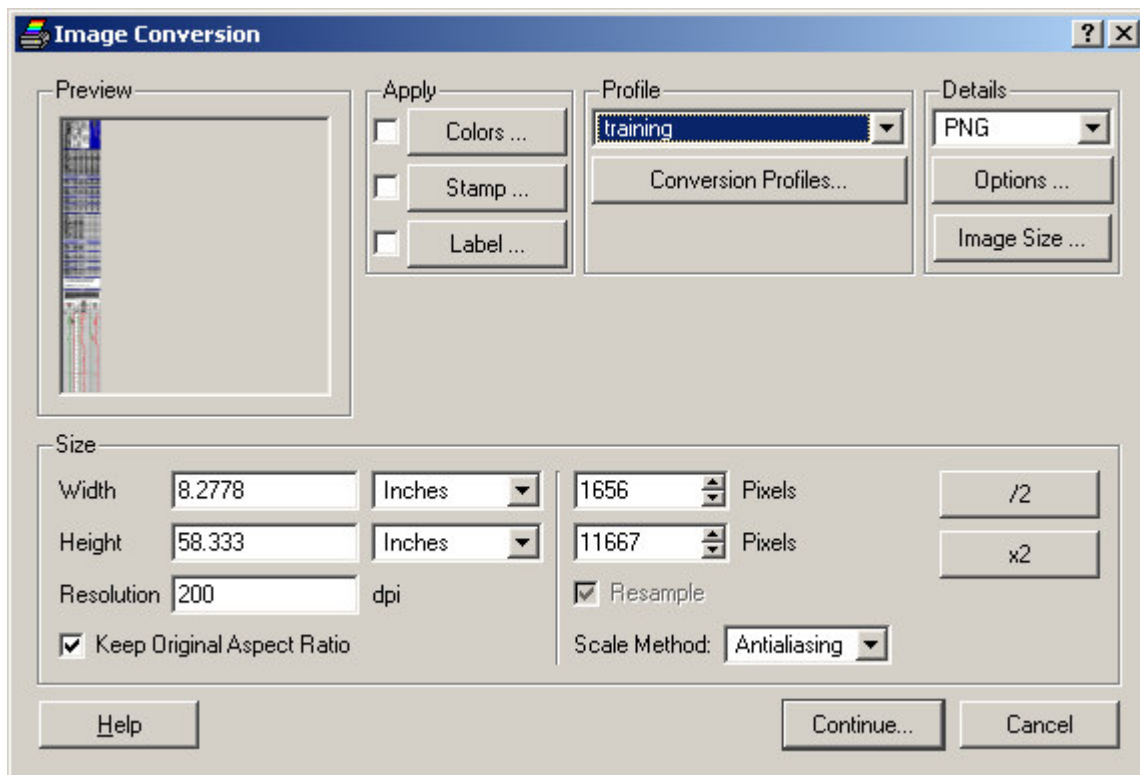
The screenshot shows the EasyCopy application window. The title bar reads "EasyCopy - K:\lga\temp\training\pdflog.pdf.pdf". The menu bar includes "File", "Edit", "View", "Capture", "Image", and "Help". The toolbar contains several icons: a folder, a floppy disk, a camera, a printer, a color bar, a film strip, a question mark, a zoom in (+) icon, a zoom out (-) icon, a pan (hand) icon, a zoom in (+) icon, a zoom out (-) icon, and a crop (scissors) icon. The zoom in (+) and zoom out (-) icons are highlighted with a red box, and the pan (hand) icon is highlighted with a blue box. The main window displays a PDF document with multiple pages of text and a large table. The bottom status bar shows "Press F1 for Help" and "1 of 1".

The zoom tools let you zoom into a specific area - or just zoom a factor of 2 with every click. You can zoom stepwise out choosing the tool in the middle or zoom out to your original image with the rightmost tool

Crop tools let you cut out the most important part. If you want to remove part of your log file use ctrl D to duplicate the file - then crop the areas you want to keep and move them together. You can now group the new file, convert or print it.

When you zoom in, scroll bars appear on side and bottom for scrolling your file - you can also use  the pan tool for moving around in your image

Using the save-as function you can convert it to, for instance, a PNG or TIFF file. (The suggestion of PNG is because this format compresses this type of file very well with a lossless compression – TIFF with LZW compression is another good choice)

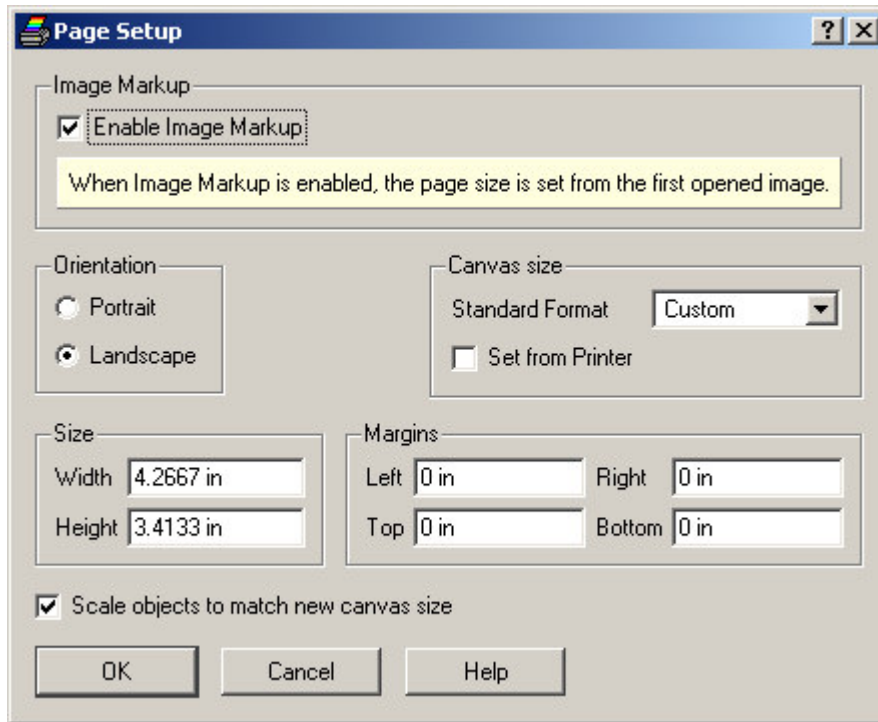


The profile chosen for creating this document 'training' secures that the original size is maintained.

Annotation/mark-up of the concatenated well log file

The PDF Well log file can also be opened in EasyCopy's canvas mode, Montage, for highlighting special areas or adding text and graphics.

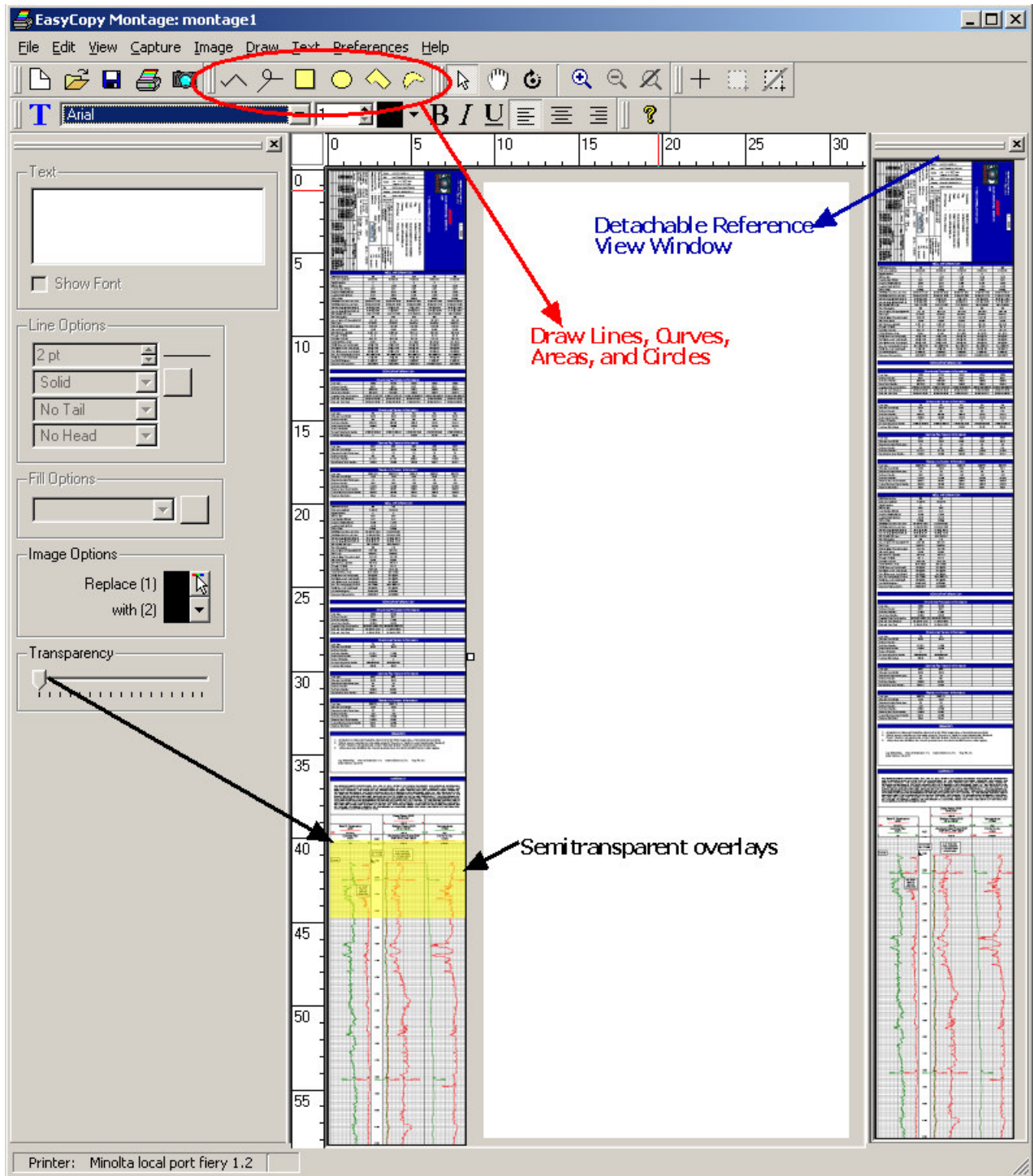
Setting the Page Setup to 'Mark-up' mode, your concatenated log file will become your canvas. This secures that you maintain your original size and quality even though you add text, raster images, f. inst a logo or other mark-up.

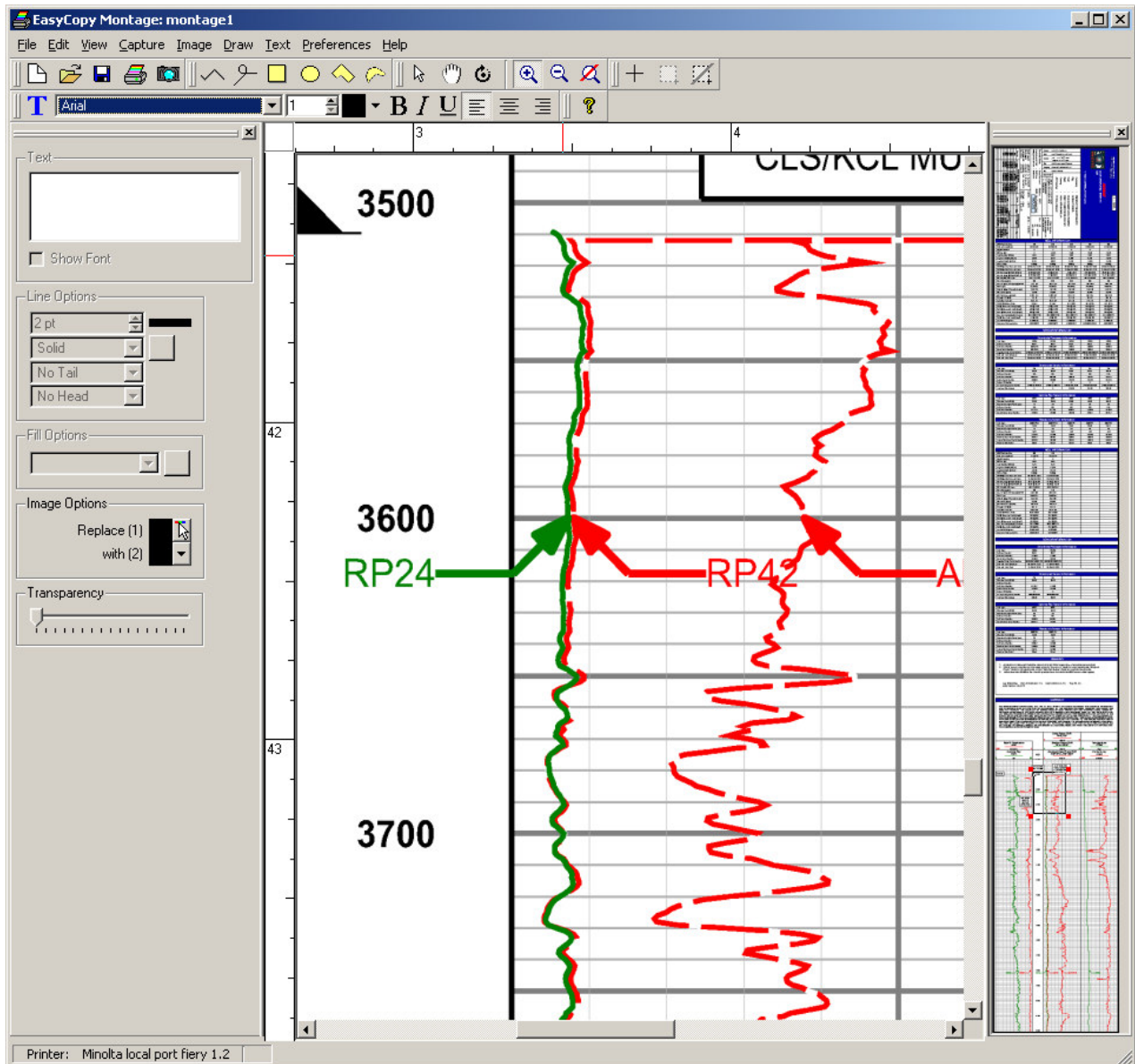


If the 'Enable Image Markup' is NOT toggled on your well log file will open on a canvas of the size of your choice. Choose between standard page sizes, for instance letter or A4 or choose a custom size to suit your purpose.

This is valuable if you want to place several well log files on one canvas for a presentation.

Whichever selection you make, you can ensure that you work with your files in 1:1 – or you can choose to make them fit a specific page size.





With the new reference view window you can easily navigate your log while being zoomed in to details.

Viewing the combined log is now very easy with the Zapview feature and of course the crop feature can also be used.