



Auto (Video) Capture for capturing animations, work processes etc.

Showing others exactly what happens on your desktop is often the quickest and clearest way to communicate.

With EasyCopy, you can select anything on your Windows®, UNIX® and Linux® desktop – an animation, an area, an image, or error message – and capture it. Then, save the capture(s) to file, share it by e-mail, or drop it into PowerPoint®, Word®, Open Office® or another favourite application. You may also create your own movie from series of captures or files.

EasyCopy supports capture from any application including those using the Open-GL graphics system and/or displaying on multi head systems.

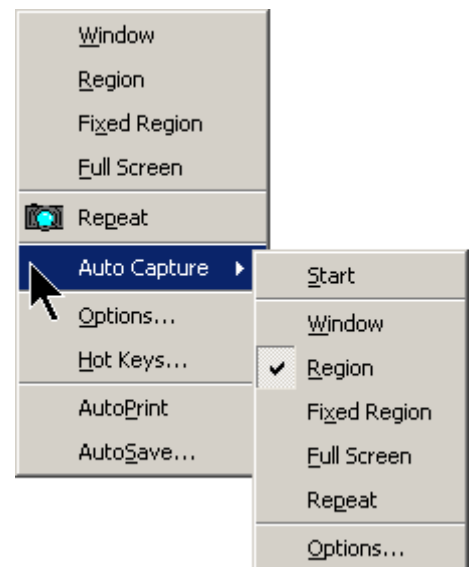
This paper will describe how EasyCopy can create videos in two ways – Auto Capture and Manual Capture. Common extra such as Playlist creation and editing are described at the end of this paper.

The created movie file can be directly inserted into your Office® application but this has the drawback of only being able to start the movie when the page is opened or when the movie is clicked. A better method is to insert a Media Player object which will allow rewind and pause; this does however require that the movie file is distributed with the presentation and on the same path.

Auto Capture.

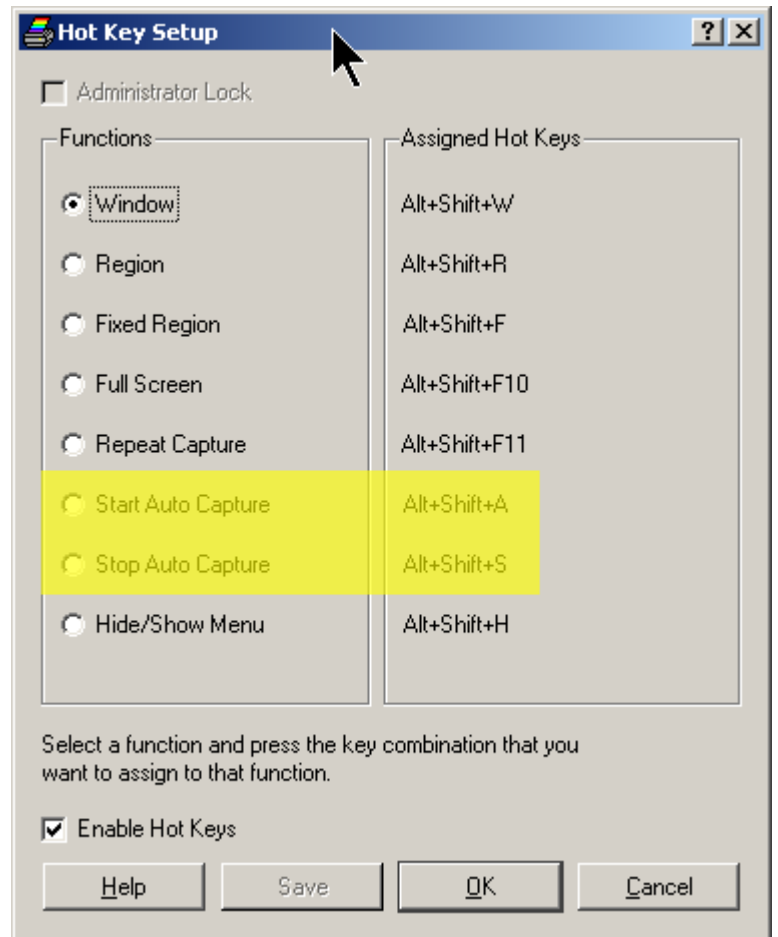
Use the Capture dropdown to access the capture options.

Before you start, set the appropriate Hot Keys to start and stop the capture. You also have to decide if you would like to include the mouse cursor or not. Then determine which of the capture modes you will like to use, Window, Region, Fixed Region or Full Screen. In this example, Region has been selected.

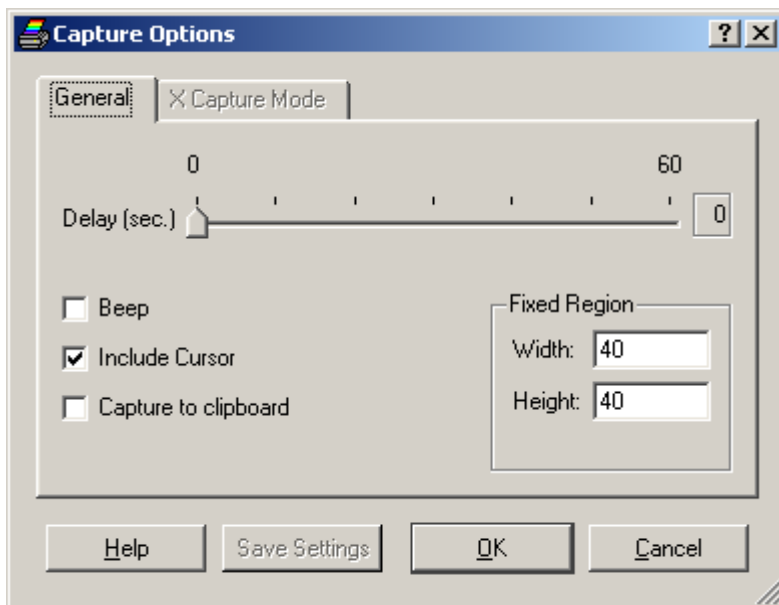


Go to the Hot Keys menu:

You can select any hot key combination available on your system.



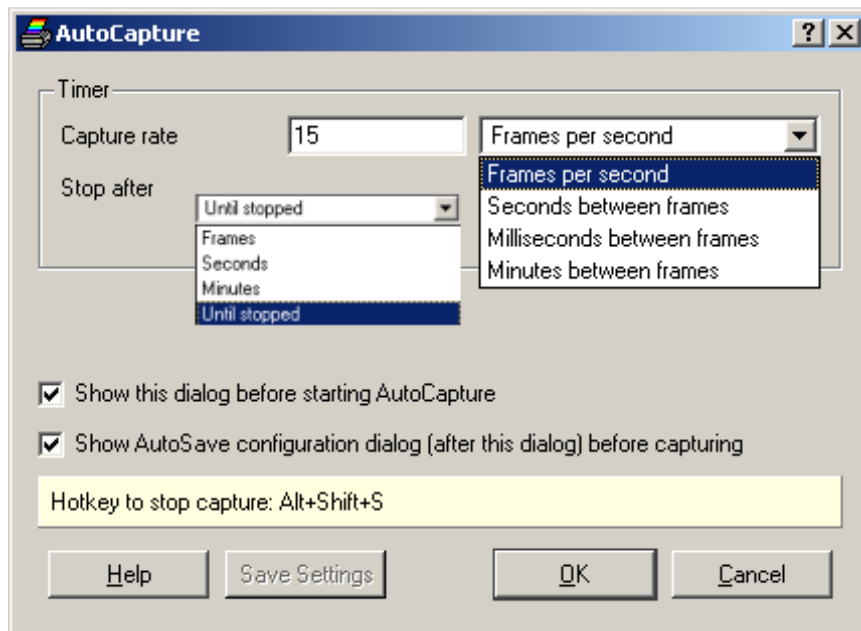
Next you go to 'Options' :



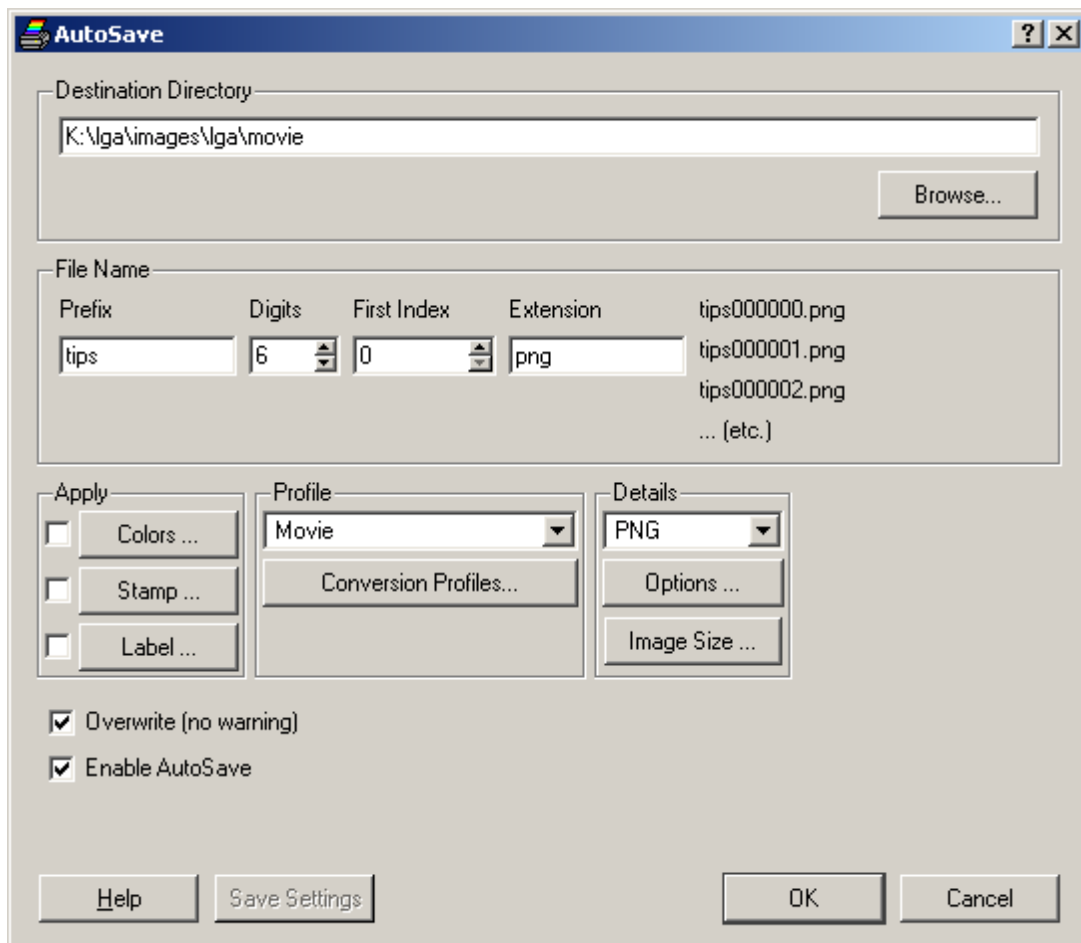
and verify that the settings are as required.

Now, in the Capture/Auto Capture dialogue, click start. Here you can determine your Capture rate.

How many frames you can capture depends on your graphics card, your CPU and the load from other applications. We recommend that you close all other applications as Auto Capture is a CPU intensive.

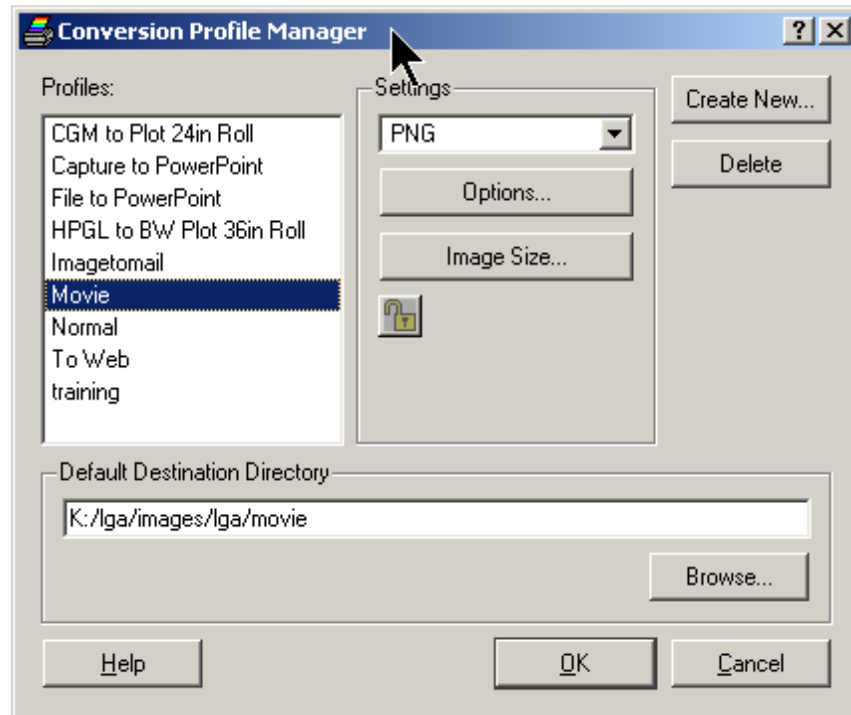


Before you start the auto (video) capture you go to the AutoSave dialogue:

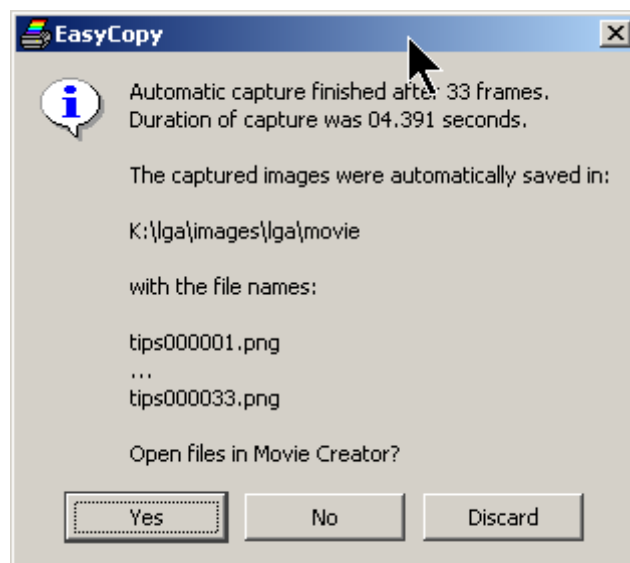


The Auto Save feature can also be used when the user wishes to save captures with sequential names without needing to enter the filename manually after each capture.

If you have not already defined a profile for your captures, go to 'Conversion Profiles' and determine format, size and destination directory – and name of your new profile. Next time you want to create an animation, or document a work process, just select the appropriate profile and you are ready to start.



When finished – either when you have reached the number of frames or the specified time, or manually stopped the capture session with the hot key, you will be asked if you desire to open your captures in the Movie Creator®.

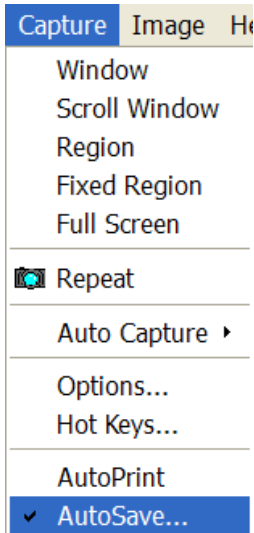


If you are ready to create your Movie or Animation, click 'Yes'. If not you can at any time open the sequence or sequences of captures in the Movie Creator.

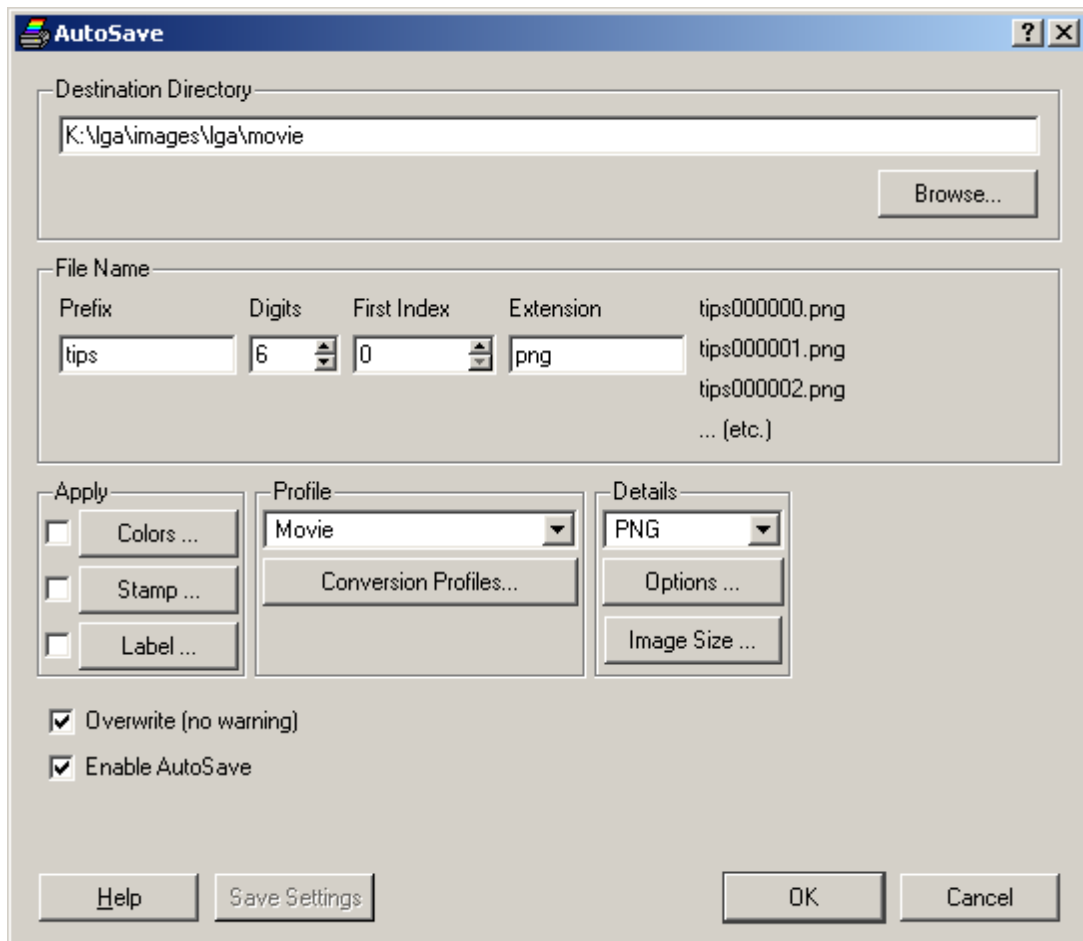
Manual Capture.

This is used when the user wants to create movie frames manually and then combine them into a Movie, if the frames (images) already exist please skip to Movie Creation from Files. This example shows how to use EasyCopy's AutoSave feature to create sequential numbered files when the user is manually moving the model to be captured.

Use the Capture dropdown to access the capture options

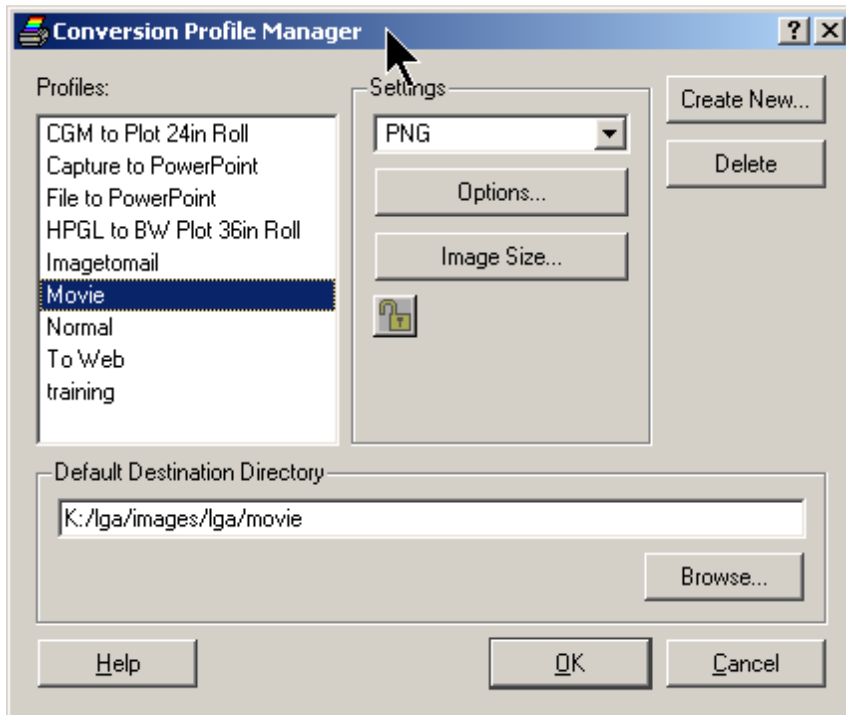


Check the AutoSave option and



The Auto Save feature can also be used when the user wishes to save captures with sequential names without needing to enter the filename manually after each capture.

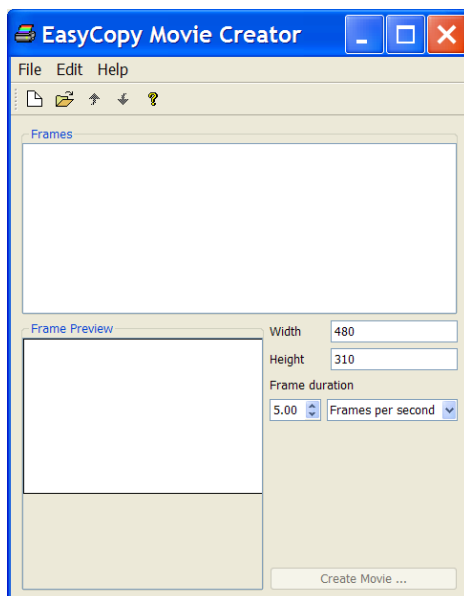
If you have not already defined a profile for your captures, go to 'Conversion Profiles' and determine format, size and destination directory – and name of your new profile. Next time you want to create an animation, or document a work process, just select the appropriate profile and you are ready to start.



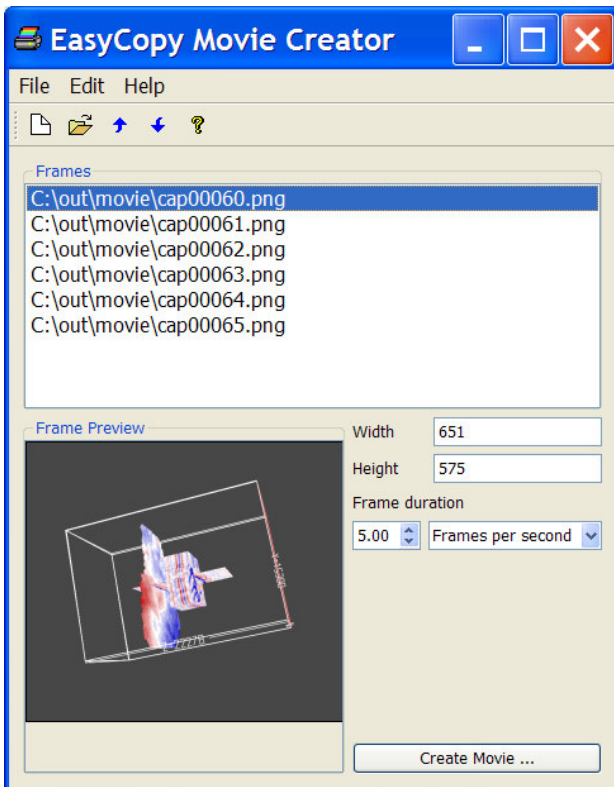
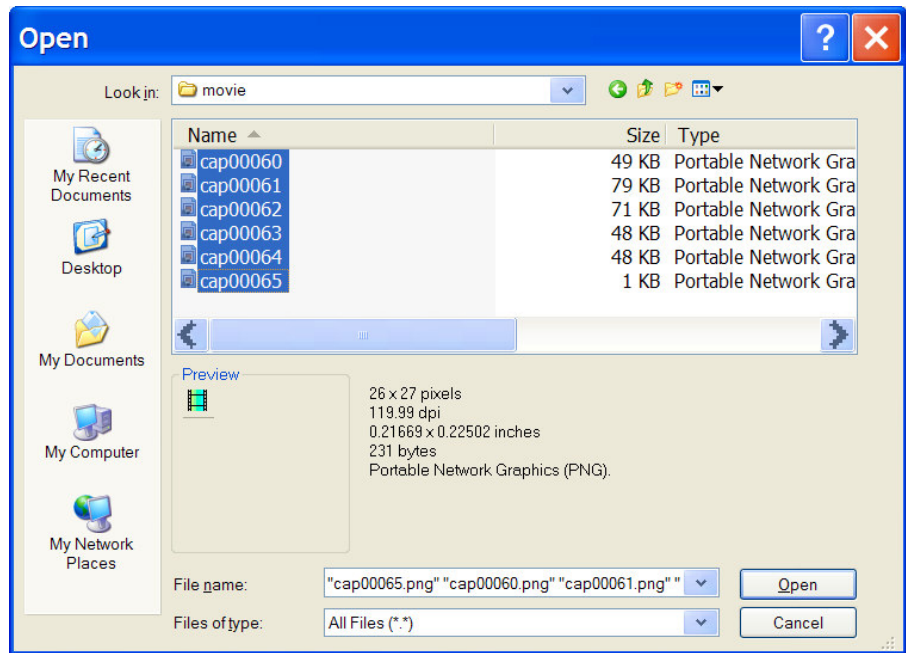
Go to the Hot Keys menu and setup a Hotkey for repeat capture.

Now go to the capture menu and select the region, window..... to be captured. As soon as the desired area is selected the first capture is made (in the case of a region the user needs to define it). The model should now be moved and the Hotkey for repeat capture used. Carry on until all the required captures (frames) have been made.

Now select Movie Creator from the File dropdown menu or it's icon .



Select the files to be used to create the Movie and then open.



Select the Frame duration parameters and Create Movie

Playlist creation and editing

Provided the files used to create the movie are retained the user can both edit the order (up and down blue arrows) in which the frames are used when creating a movie and also add extra files or duplicate frames. The duplication feature is useful when a header or footer frame is required and needs to be shown for longer than other frames. The actual file is not duplicated just the name in the playlist. For example if the playback is 5 frames per second and the header frame is required for 2 seconds duplicate it 9 times.

The playlist can also be saved for future use.